



TAKE PICTURES. FURTHER.™

The latest word in scanners from the first name in imaging



Thanks to comprehensive photo-related products ranging from traditional film and paper to digital hardware, software and output solutions, Kodak Professional's reputation of innovation and dependability has led the imaging industry for generations. This end-to-end expertise makes the KODAK PROFESSIONAL RFS 3600 Film Scanner a natural choice for digital newcomers and longtime users alike. By delivering an astounding 3600 dpi, the RFS 3600 will exceed your most demanding needs, whether they're newspaper, government, creative, corporate, law enforcement, or home applications.

Superb Image Quality

This is accomplished by combining 3600 dpi resolution with a 3.6 dynamic range and proprietary color imaging science from Kodak to generate scans with better color accuracy, clarity and detail. True 36-bit scanning is capable of delivering over a 50 MB file with impressive shadow and highlight details. With the RFS 3600 scanner, your newly created digital images are as crisp and detailed as they were on film.

Incredible Flexibility

Add this to the ability to select ICC profiles and you have the solution for a multitude of applications from web pages to CMYK files for pre-press. The scanner ships with a selection of ICC profiles developed by Kodak that give the user unmatched flexibility in generating digital files for today's demanding applications. There are film terms for a wide range of films and output profiles for a wide array of monitors, output devices and standardized color spaces such as RGB, Lab, and CMYK.

User-Friendly Interface

The intuitive, tabbed user interface enables operators to quickly master the capabilities of this scanner. If you do need to fine tune an image, the user interface makes it easy to perform image edits using recognizable color and tonescale tools. And if you have spent some time developing the perfect settings for a particularly difficult shooting environment, don't worry, the RFS 3600 lets you save those settings. In addition, the RFS 3600 lets the user batch-scan 35 mm film strips (up to 36 frames) without the need for cumbersome film holders. Input the film, start the scanning process and watch your productivity increase.

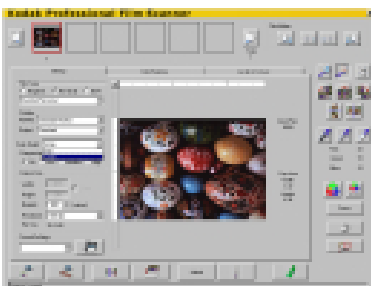
Proprietary Algorithms

The scanner also comes with a user-selectable Scene Balance Algorithm (SBA) developed by Kodak that optimizes first-time scans of color negative and chrome films for color balance and density. So you get consistent high-quality scans with faster turn-around and increased productivity.

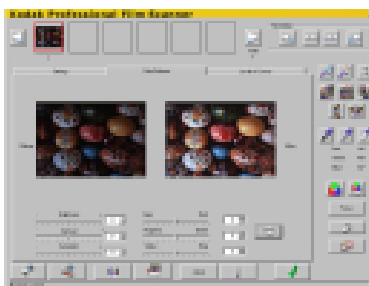
Portability

Not only do you get quality scans and more productivity, the RFS 3600 scanner is also portable. Pack it up and take it on the road; this scanner loves to travel. Take the RFS 3600 scanner with you anywhere and get the same great results.

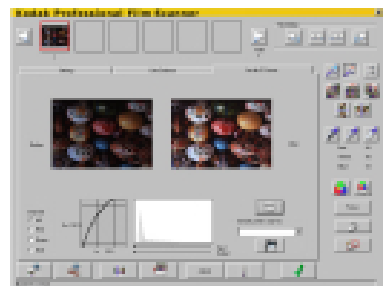
Settings Tab



Color Balance Tab



Levels & Curves Tab



3600



Feature	Advantage	Benefit
<ul style="list-style-type: none"> Scans color (negative and positive) and black-and-white 35 mm film/mounted slides 	<ul style="list-style-type: none"> One scanner purchase for all 35 mm needs 	<ul style="list-style-type: none"> Fits easily into existing workflow Expands your business's capability
<ul style="list-style-type: none"> Up to 3600 dpi resolution 	<ul style="list-style-type: none"> Provides customer with flexibility to cover simple to demanding output applications 	<ul style="list-style-type: none"> Scanner is more versatile Improves workflow and efficiency
<ul style="list-style-type: none"> 3.6 dynamic range 	<ul style="list-style-type: none"> High dynamic range captures critical highlight and shadow detail 	<ul style="list-style-type: none"> Higher quality scans provide higher quality output
<ul style="list-style-type: none"> Batch scanning capability 	<ul style="list-style-type: none"> Scans 3 to 36 frames without cumbersome film holder 	<ul style="list-style-type: none"> Greatly enhances productivity No need to purchase optional accessories
<ul style="list-style-type: none"> Proprietary image path and film-specific LUTs (Look Up Tables) from Kodak 	<ul style="list-style-type: none"> Ensures excellent first-time scans 	<ul style="list-style-type: none"> Workflow and cost savings with one-time scan Saves costly rescanning
<ul style="list-style-type: none"> 12 bits per color channel 	<ul style="list-style-type: none"> Additional color gives truer image reproduction 	<ul style="list-style-type: none"> Excellent image quality and resolution
<ul style="list-style-type: none"> Tabbed user interface 	<ul style="list-style-type: none"> Intuitive, easy to use Quick access to imaging tools 	<ul style="list-style-type: none"> Improves operator productivity Minimizes training—you are up and scanning fast!
<ul style="list-style-type: none"> Proprietary Scene Balance Algorithm 	<ul style="list-style-type: none"> Generates scans with better color balance and density 	<ul style="list-style-type: none"> Saves time and money with one-time scan Higher quality scans provide higher quality output
<ul style="list-style-type: none"> Color management 	<ul style="list-style-type: none"> Uses input and output ICC profiles 	<ul style="list-style-type: none"> Efficient image processing from capture to print
<ul style="list-style-type: none"> Ability to select ICC profiles 	<ul style="list-style-type: none"> Adds flexibility for a multitude of applications such as CMYK files for pre-press 	<ul style="list-style-type: none"> Scanner provides more applications to profit from
<ul style="list-style-type: none"> Capability to save settings 	<ul style="list-style-type: none"> Easily recall settings by file name 	<ul style="list-style-type: none"> Enhances efficiency

Includes

- Scanner
- AC adapter and cables
- USB and SCSI II cables
- CD Acquire, TWAIN, and ICC profiles
- CD—Manual (English, German, Italian, Spanish, French, and Japanese)

Specifications

- 100/120V, 50/60 Hz, 1.0A
- 220/240V, 50/60 Hz, 0.5A
- UL, CSA, TUV, CE
- L: 11.5 in. (29.2 cm)
- W: 7.75 in. (19.7 cm)
- H: 4.25 in. (10.8 cm)
- 3.4 lbs. (1.5 kg)

Software

- Acquire module for MACINTOSH
- TWAIN Data Source for WINDOWS-based Operating Systems
- ADOBE PHOTOSHOP LE Software V5.0

System Requirements

- POWER/MACINTOSH Computer, 300 MHz
- OS 8.5.1 or later
 - 128 MB DRAM
 - 200 MB of available hard disk space
- PC-Compatible Computer, 300 MHz
- WINDOWS 98, 2000 or NT 4.0
 - 128 MB DRAM
 - 200 MB of available hard disk space
 - Operates with SCSI II or USB Interface

Ordering Information

Description	CATNo.
KODAK PROFESSIONAL RFS 3600 Film Scanner	1820935
KODAK PROFESSIONAL RFS 3600 Film Scanner AC Adapter	1040070

For more information

visit us on the Web at

www.kodak.com/go/RFS3600

For assistance in the U.S., call
1 800 235-6325.
In Canada, call 1 800 465-6325.

Eastman Kodak Company
343 State Street
Rochester, New York 14650
USA



© Eastman Kodak Company, 2000. Kodak, Kodak Professional, and Take Pictures. Further, are trademarks. As an ENERGY STAR® Partner, Eastman Kodak Company has determined that this product meets the ENERGY STAR® guidelines for energy efficiency. 11/00 CAT 833 7834 PPI 794

Kodak Professional