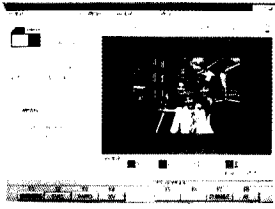


Advanced Features for Easy Operation

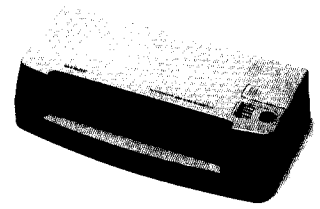
- Image data is shown as a positive image on a color monitor for confirmation before printing.



- Changing between negative and positive film is easy.
- Automatic negative carriers for 135 and IX240 film, a semi-automatic carrier for positive film and various manual carriers are available.
- One channel printing improves productivity and helps eliminate errors by the operator.

- With the center of the film as the axis, a photo can be trimmed up to 1.4X magnification. A 135F cropping carrier (optional) enables cropping in any direction.
- Uses low-waste processing chemical Ready-to-Use-type CP-47L. (Alternately, CP-40FAII can be used.)

- A calibrator ensures color accuracy and simplifies maintenance.



Main Specifications

SCANNER & IMAGE PROCESSOR SP-1000

Type:	Daylight, floor-type (unified unit of film scanner, image processor, and color monitor)
Films:	135 negative film; IX240 negative film; 135 reversal film (roll, piece, and mounted)
Image reading:	920 × 1,380-pixel CCD scanner; 3-color sequential reading
Lens:	Motor-driven zoom lens (135F ~ 2x magnification)
Light source:	24V 250W halogen lamp, RGB rotating filter, internal light adjusting function
Hardware image processing:	Color-matching process; gradation control, image size conversion, hyper-sharpness process, hyper-tone process
Software image processing:	Total image set-up algorithm, index print image editing
Operating system:	Windows NT 3.51
Interface:	Connectable to various drives via SCSI*
Input:	Special keyboard, mouse (not required for ordinary operation)
Display:	15-inch CRT color monitor (SVGA, 800 × 600 pixel, full color)
Film carrier:	135 automatic negative carrier NC135SD (standard) Automatic negative carrier NC240D for Advanced Photo System film (optional) 135 automatic slide carrier SC135A (optional) Various manual carriers (optional)
Power requirements:	AC 100-120V/200-240V (50/60 Hz), approx. 10A
Dimensions:	1,200 (W) × 780 (D) × 1,135 (H) mm
Weight:	187 kg
Installation space:	Approx. 0.94m ²

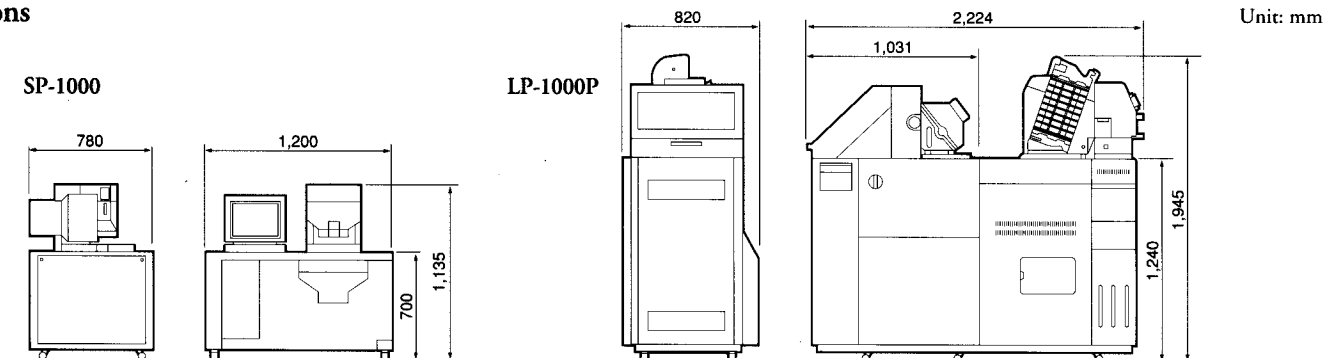
* With a SCSI interface card in the PC expansion slot, the SP-1000 can support all compatible media drives.

LASER PRINTER & PAPER PROCESSOR LP-1000P

Type:	Daylight, floor-type (unified unit of laser printer, processor, cutter, and sorter)
Processor capacity:	3R-size (89 × 127 mm): 1,128 prints/hr. Panorama (89 × 254 mm): 404 prints/hr. 8" × 12" (203 × 305 mm): 337 prints/hr. A4 (210 × 297 mm): 346 prints/hr.
Actual production capacity:	Approx. 1000 prints/hr. (3R-size/135 negative film)
Exposure:	Scanning exposure system by RGB laser
Exposure speed:	75mm/sec. (sub-scanning speed in sequential printing)
Operation display:	LCD display, 40 characters × 2 lines
Image resolution:	300 dpi; raster density: 600 dpi
Paper:	Fujicolor Paper (silver halide)
Paper width:	89 - 210 mm (up to 130mm width: 180m length roll; over 152mm width: 90m length roll)
Print size:	3R-size - 8" × 12", A4
Paper loading:	Auto loading
Backprinting:	Maximum of 2 lines × 40 characters
Processing speed:	1.73 m/min.
Processing time:	4 min. (dry to dry)
Processing tank capacity:	P1 P2 PS1 PS2 PS3 PS4 20ℓ 20ℓ 10ℓ 10ℓ 10ℓ 10ℓ
Replenishment tanks:	P1R, P2R, PSR each has 10ℓ capacity
Disposal tanks:	20ℓ × 2 (built-in)
Sorter:	SU800M, sorts max. 8 orders of panorama/full frame mixed prints
Power requirements:	GS type: 3 phase/single phase AC 220 - 240V, approx. 7kVA UL/CSA type: Single phase AC 220 - 240V, approx. 7kVA
Dimensions:	820 (W) × 2,224 (D) × 1,945 (H) mm
Weight:	572 kg/690 kg (operating weight)
Installation space:	Approx. 1.47m ²

Specifications are subject to change without notice.

Dimensions



FUJIFILM

FUJI PHOTO FILM CO., LTD.

26-30, NISHIAZABU 2-CHOME, MINATO-KU, TOKYO 106, JAPAN